

# serveIT EYRE



YOUR LIBRARY, YOUR CHOICE



The EYRE is an exciting addition to D-Tech's line of serveIT self-checkout systems. The EYRE kiosk is designed to maximize the functionality of self service in a library while minimizing floor space.

EYRE's basic configuration is a self-service kiosk that can checkout EM or barcoded material as well as RFID tagged items. Additional options include a PCI compliant credit card terminal as well as a coin and note acceptor that gives change plus Apple Pay.

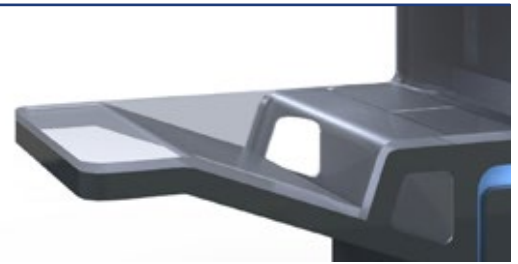
EYRE's large 24" touch screen monitor is user friendly with easy to understand instructions to assure patron success. The large checkout area for material placement is sure to delight patrons with a lot of materials to checkout.

D-Tech's EYRE was designed with the future in mind, and that future is now!

## KEY FEATURES

- Expandable kiosk design with small footprint
- Advanced 24" touch screen monitor
- EM, Barcode and/or RFID checkout of materials
- Ergonomic design that meets DDA requirements
- 3D patron library barcode card scanner for fast, accurate scans
- New i16 D-Tech software for robust applications
- Directional lighting indicators
- Payment of fines and fees with optional PCI compliant credit card terminals, coin and note acceptors, student accounts and Apple Pay
- Integrated receipt printer with low paper warning lights
- Secure access compartments for staff to change receipt paper, empty and restock coin and note acceptor
- eBook lending by OverDrive
- WIFI network connection (optional)
- Scheduled shut down and start-up of kiosk saves staff time
- Choice of colours and optional RAL designer shades in durable powder coat finish

Specifications subject to change without notice • © Copyright D-Tech International 2020



## SPECIFICATIONS

Height 1580mm

Width 670mm

Depth 390mm

Weight 68kg

Please contact D-Tech for advice and full dimensions if integrating this solution into bespoke furniture etc.

## MATERIALS

Standard powder coat colours is Black Grey RAL 7021, plus optional RAL colours to compliment any library décor.

## POWER REQUIREMENTS

240 volt AC, 5 amps

## ELECTRONICS

Low energy PC with Windows 10

Portrait 24" touch screen industrial monitor

RFID industrial HF readers which meet all UK library standards.

## INSTALLATION REQUIREMENTS

One power outlet within three feet of kiosk.

One network connection with SIP2.

## STANDARDS

RFID security by AFI or EAS bit

UL, FCC, CE certified

